



MUCKLENEUK & LUKASRAND
Property Owners and Residents Association

ONE SAFE COMMUNITY

MONITORED ACCESS



WHY INVESTIGATE MONITORED ACCESS?

- **Community mandate** to investigate monitored access at the 2022 AGM
- There have been **previous attempts** but none that have reached full investigation stage
- Potentially a **viable option** if there is enough **Community interest**



PROGRESS SINCE AGM 2022

1. Engaged with an expert in the field who works on a contingency arrangement. Experience in successfully making various neighbourhoods monitored access: Groenkloof, Waterkloof, Wapadrand, Lynwood etc.
2. A few meetings were held with the expert to discuss possible options for monitored access for our area.
3. One Safe met with prominent stakeholders in the community:
 - Crawford / Advtech: *indicated they are willing to pay for a traffic count study to be conducted*
 - ZAH: *support monitored access*
 - MHSI: *we are committed to working with MHSI to try to reach an agreement*



PROGRESS SINCE AGM 2022 (Concluded)

4. The expert has proposed a plan for monitored access but we would like to be able to present various options to the Community to vote. This will take place at an Indaba/Public Meeting to be held in August. A full, detailed breakdown and explanation will be provided as well as a question and answer session.
5. In order for monitored access to be successful, a 70% vote by way of signing up and committing to pay is required from the Community.



WHAT IS MONITORED ACCESS?

- Monitored access is implemented for an area where the public roads belong to the Municipality.
- NOT an estate like Silver Lakes.
- Cannot ask for fingerprints via biometrics, ID, contact details or any other personal information of people entering.
- Does not restrict / control access into the area, it monitors access.
- The general public must still be permitted to move freely through the area (every gate should have pedestrian gate)



WHAT IS MONITORED ACCESS? (concluded)

- Only provides an **extra layer of security** by focusing traffic to specific entrance and exit points where there are gates, booms, guards etc.
- In an **emergency**: All gates are equipped with “**shut down gates**” which are generally open except in cases of emergency where these gates will be locked by security guards for the period required to diffuse the emergency.



HOW WILL MONITORED ACCESS WORK?

24-hour gate:

equipped with a boom access that is operated by a sensor or by a security guard placed at the access point.



12-hour gate:

Booms are in operation during the "active period" between 06:00 and 18:00. Gates are locked during the night-time.

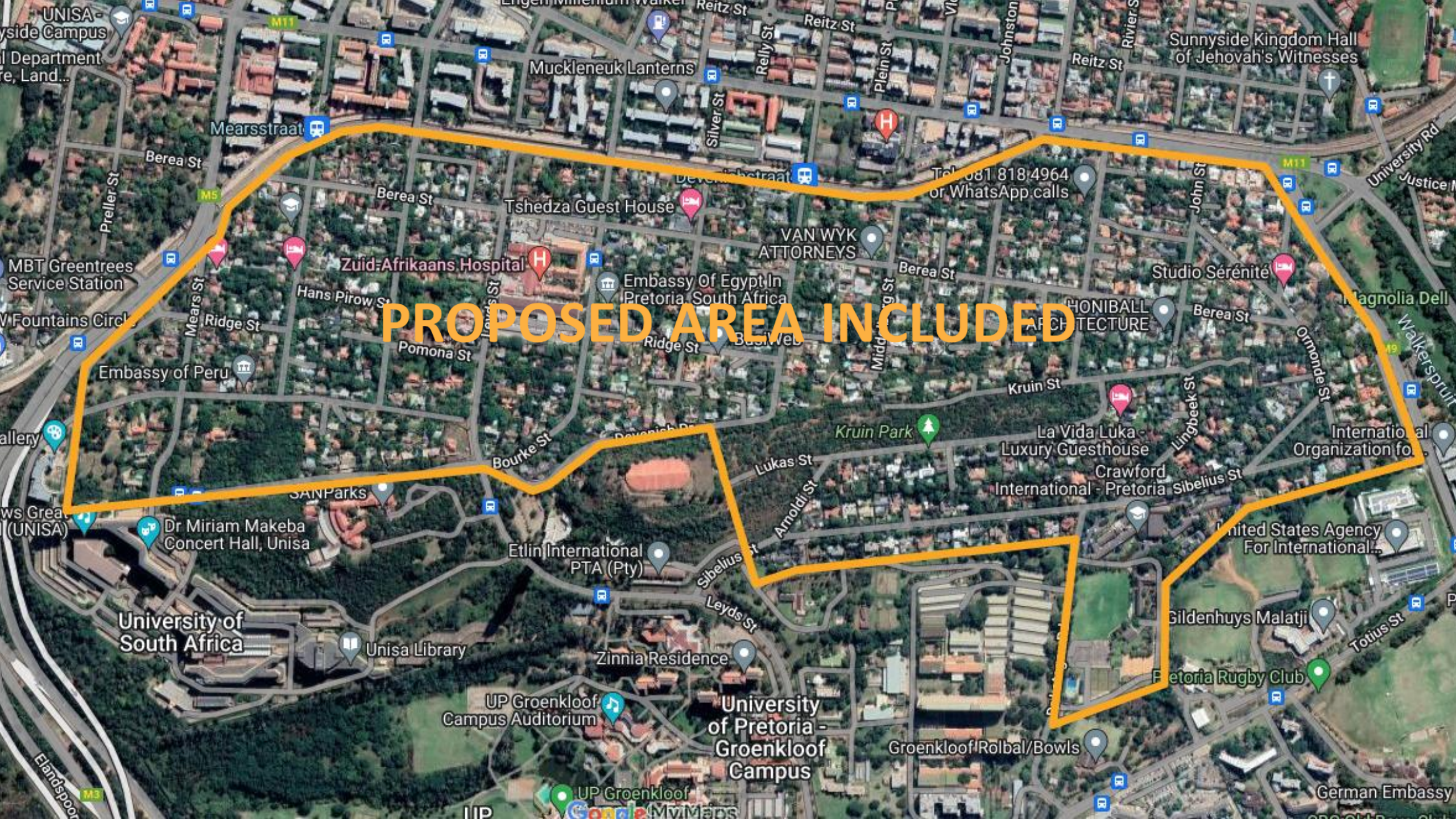


Locked gate:

This gate is permanently locked for road users, a pedestrian gate is mandatory. This gate can be limited to "community pedestrians" and all "public pedestrian's" can be directed to use the 24-hour gate. Paying members will be able to access this gate via remote or cellphone.



PROPOSED AREA INCLUDED



So what
happens next?

WHAT HAPPENS NEXT?

A full, detailed breakdown and explanation will be provided as well as a question and answer session at a **Public Meeting in August.**

It is critical to understand and take note that in order for monitored access to be implemented, it would have to be supported by 70% of all erven.

A **70% vote** (i.e signing an agreement) and **committing to pay** is required from the Community at a Public Meeting/ Indaba and thereafter.



WHAT HAPPENS NEXT? (concluded)

In Muckleneuk there are approximately 600 erven, the 70% would require that approximately **420 erven owners sign an undertaking to pay.**

Without this commitment, we cannot even submit an application.

If you are not able to attend the Public Meeting/ Indaba please join the **Connect Your Neighbour Groups** to receive the information and vote through the channels that will be communicated on such groups.



ONE SAFE COMMUNITY

Thank you

